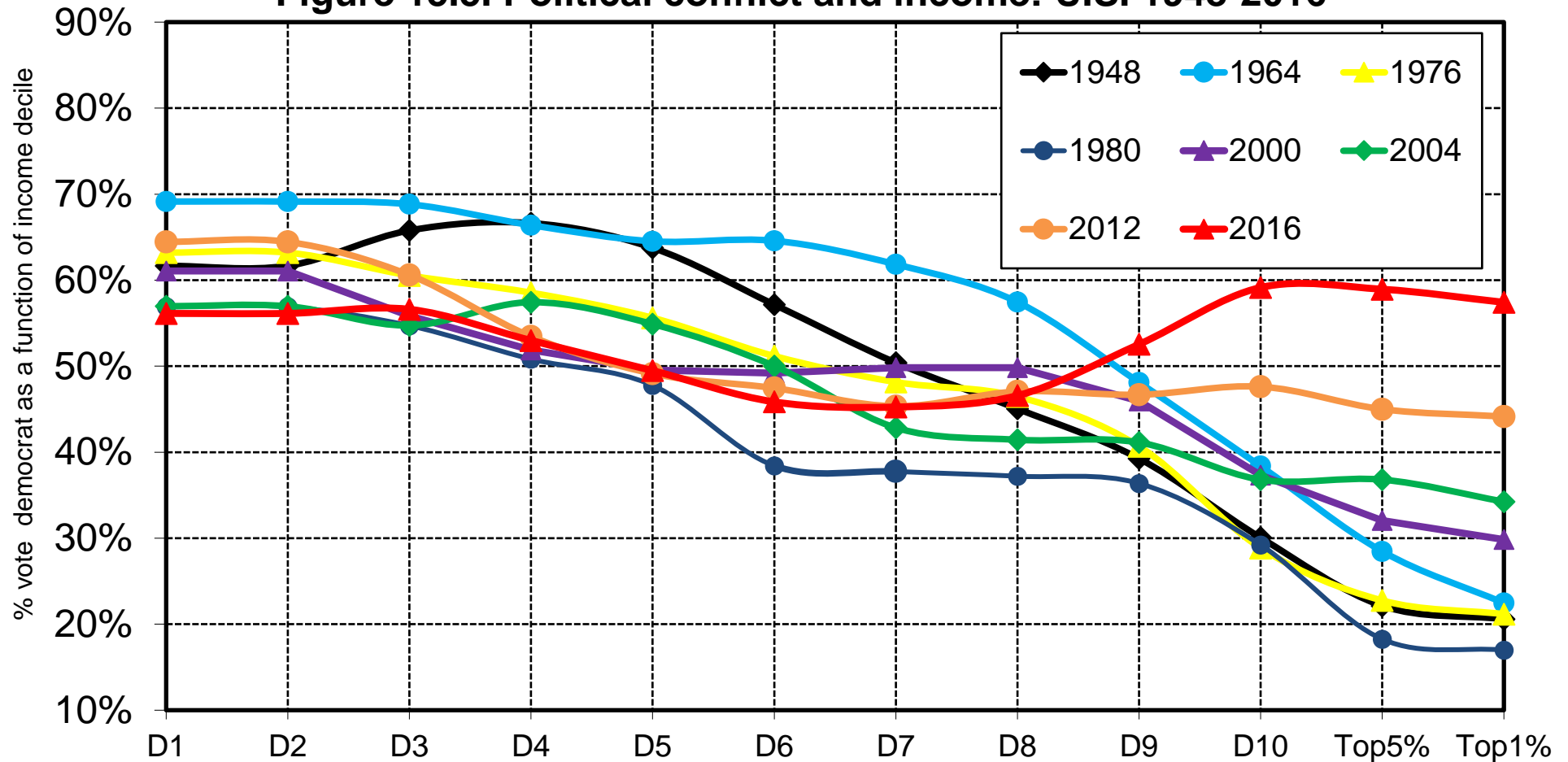


**Figure 15.5. Political conflict and income: U.S. 1948-2016**



**Interpretation.** In 1964, the democratic candidate obtained 69% of the votes among the voters with the 10% lowest incomes, 37% of the vote among those with the top 10% highest incomes and 22% among top 1% income holders. Generally speaking, the profile of democratic vote is declining with respect to income, especially at the beginning of the period. In 2016, for the first time, the profile is reversed: 59% of the top income decile voters support the democratic candidate. Sources and series: see [piketty.pse.ens.fr/ideology](http://piketty.pse.ens.fr/ideology).