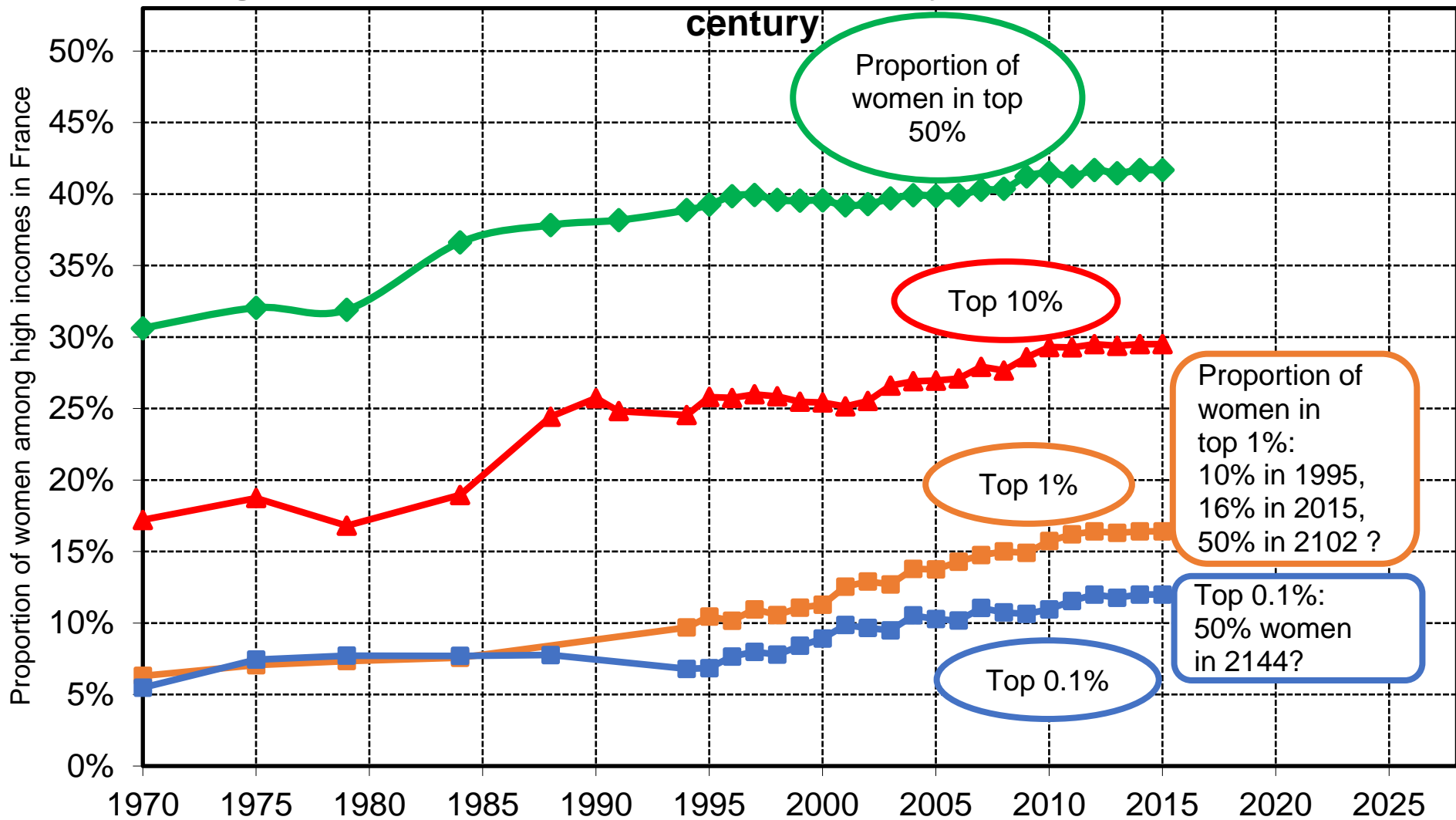


**Figure 13.11. The persistence of patriarchy in France in the 21<sup>st</sup> century:**



**Interpretation.** The proportion of women in the top percentile (top 1%) of the distribution of labour income (wages and self-employment income) increased from 10% in 1995 to 16% in 2015, and should reach 50% by 2102 if the trend continues at the same speed as during the 1995-2015 period. For the top 0,1%, parity could wait until 2144. Sources and series: see [piketty.pse.ens.fr/ideology](http://piketty.pse.ens.fr/ideology).