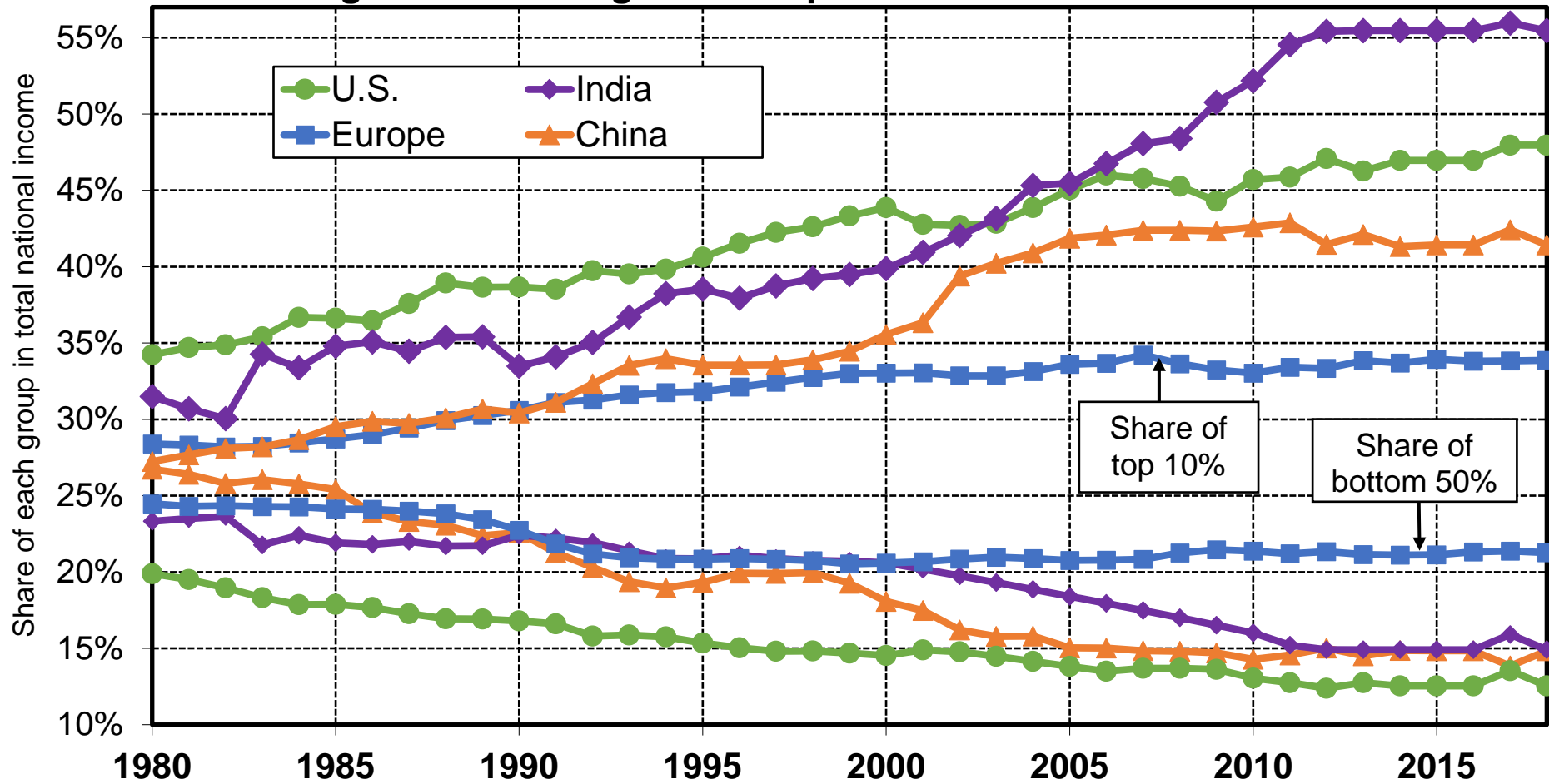


Figure 11.1. Divergence of top and bottom incomes 1980-2018



Interpretation. The share of the top decile (the 10% highest incomes) rose in all world regions: it was between 27% and 34% in 1980; it is between 34% and 56% in 2018. The share going to the bottom 50% dropped: it was between 20% and 27%; it is now between 12% and 21%. The divergence between bottom and top incomes is general, but its magnitude varies across countries: it is larger in India and in the U.S. than in China and in Europe. Sources and series: see piketty.pse.ens.fr/ideology.